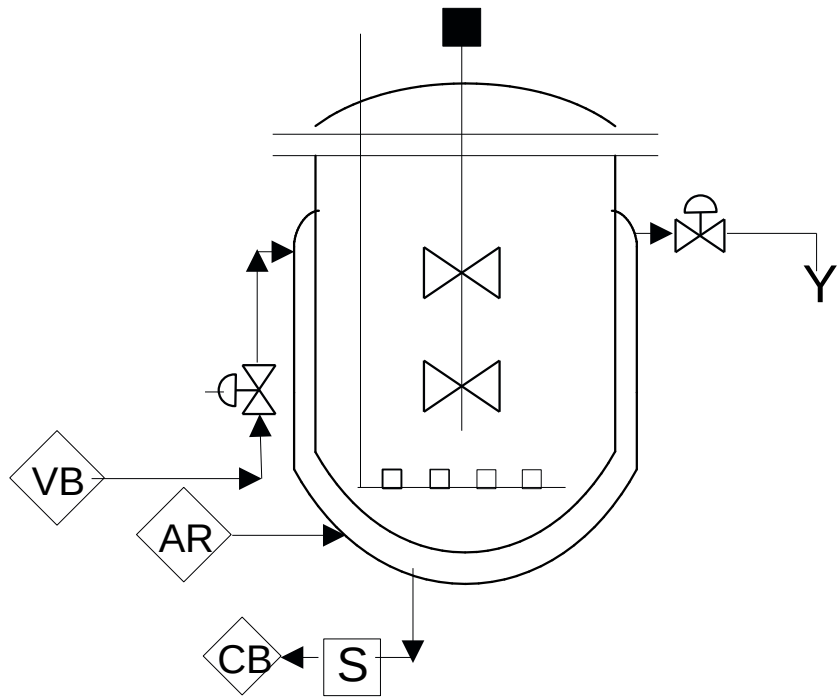
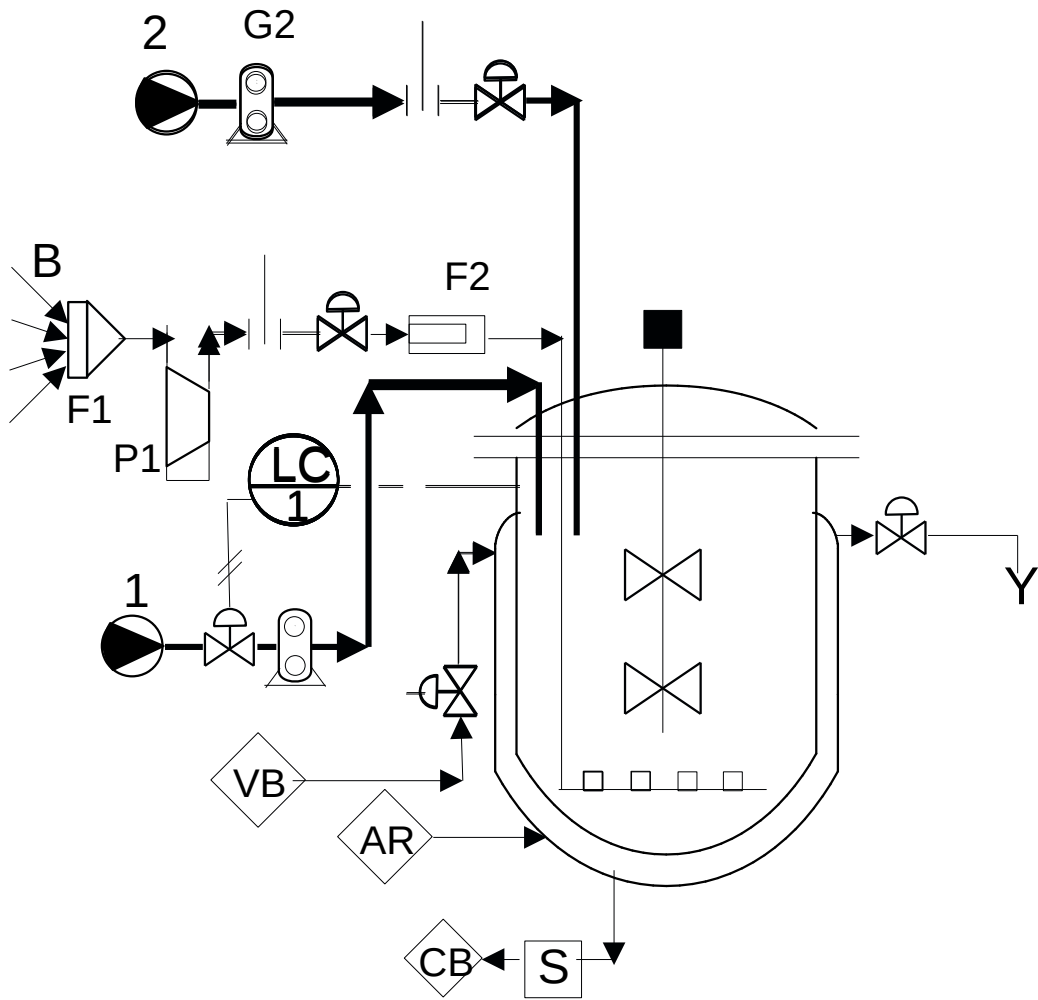


1

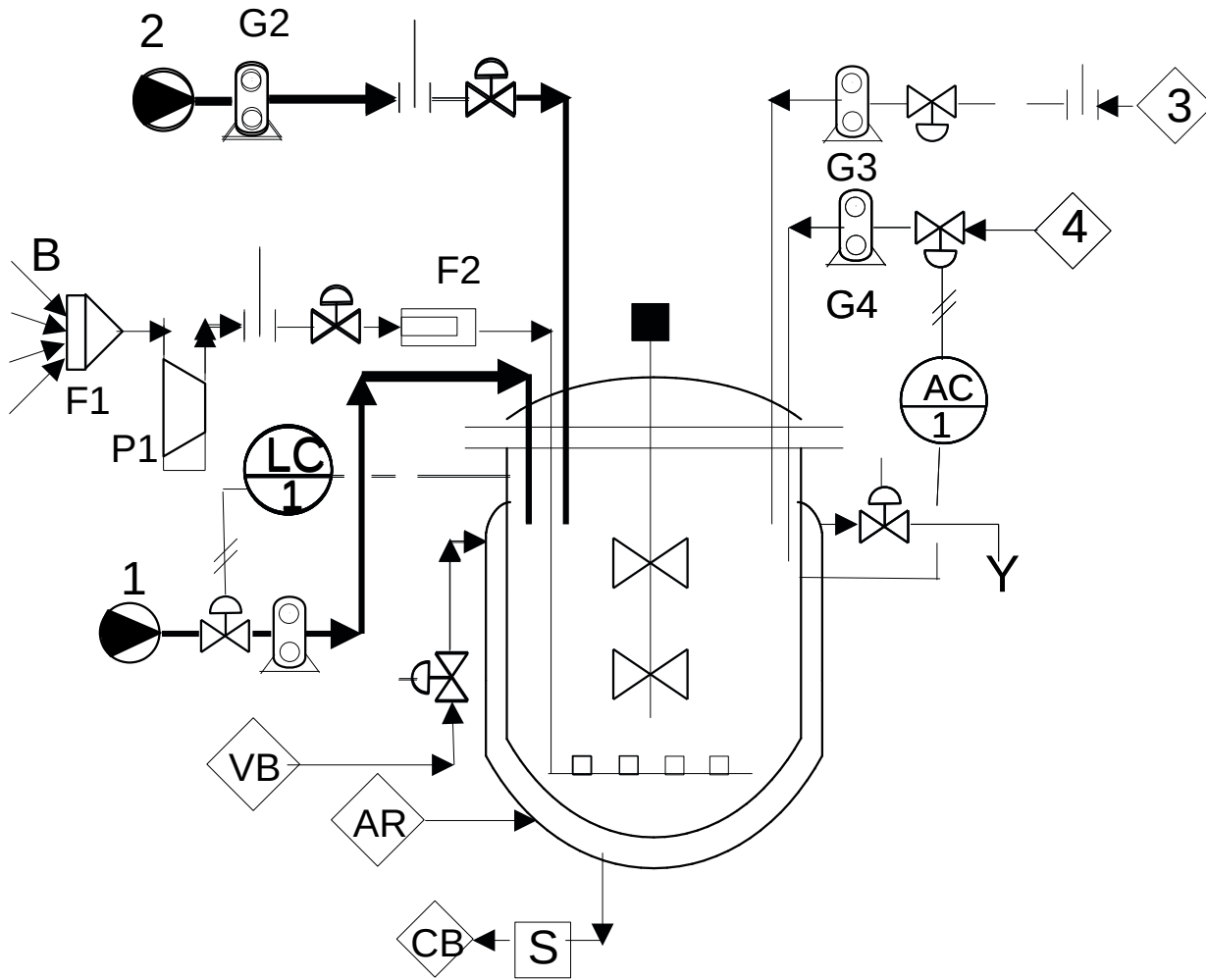


2



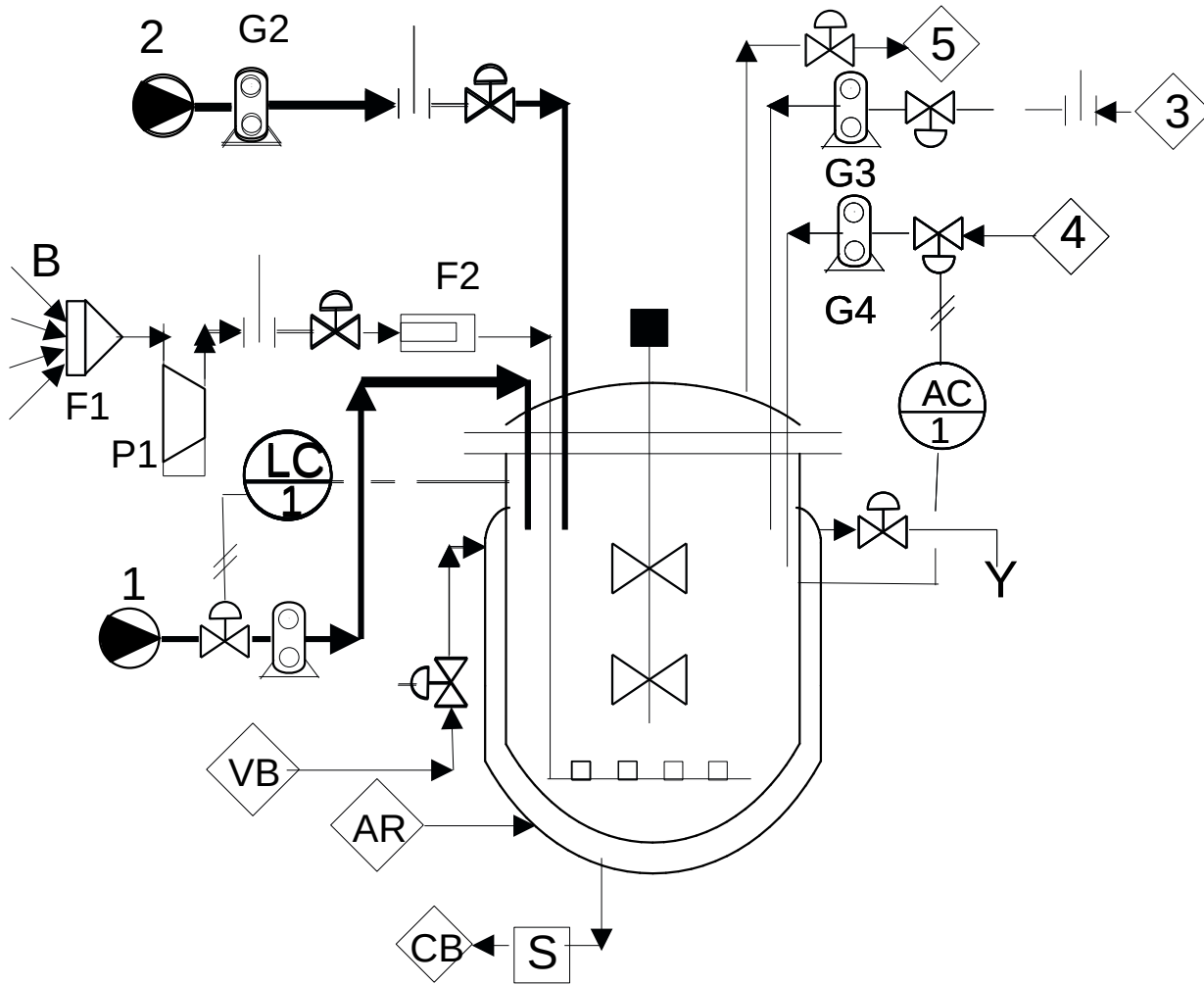
ENTRATE  
BRODO COLTURA  
INOCULO  
ARIA STERILE

3



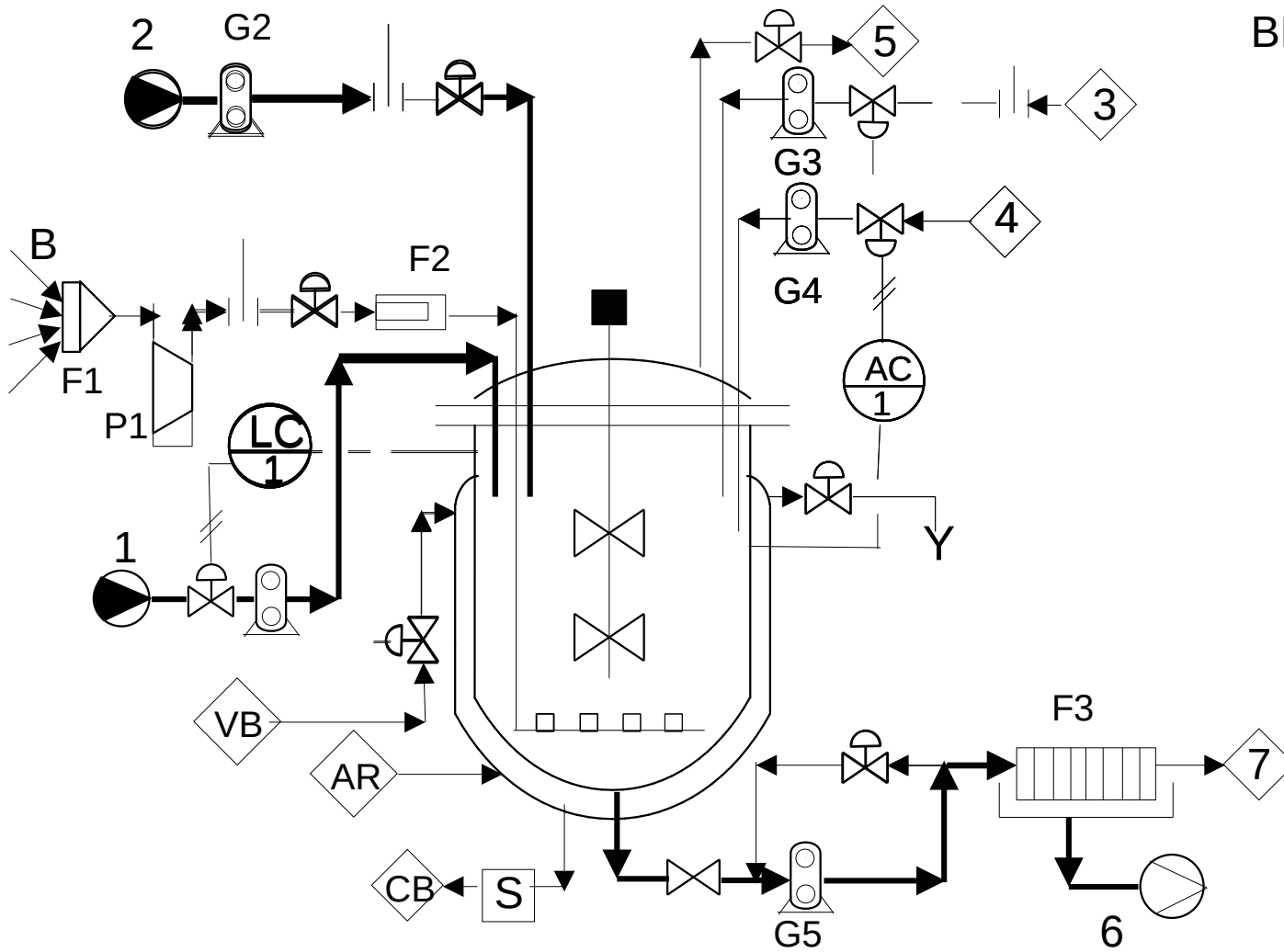
ENTRATE  
AUSILIARI FERMENTAZIONE  
CORRETTORE Ph

4



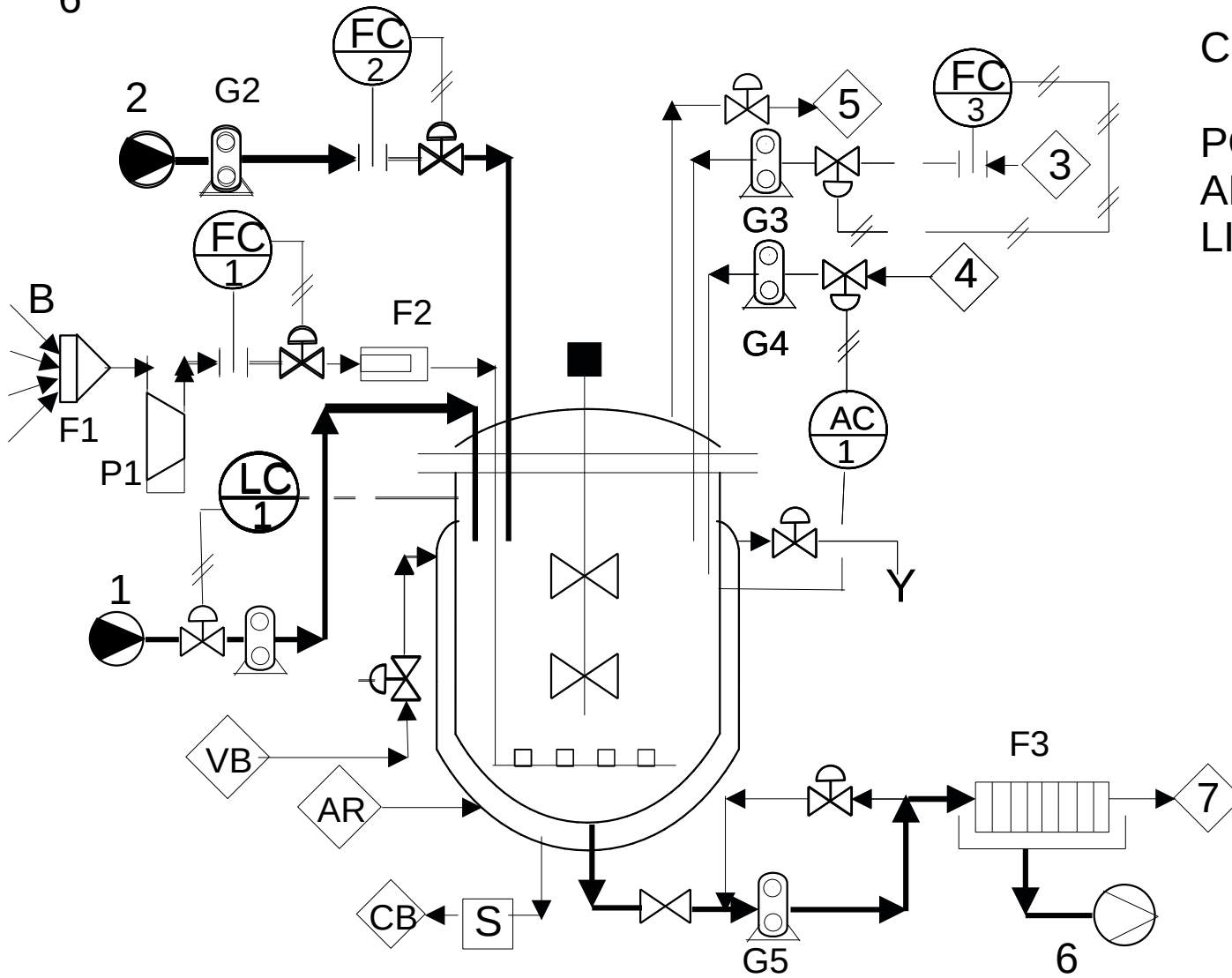
USCITE  
SCARICO GAS

5



USCITE  
BIOMASSA + BRODO

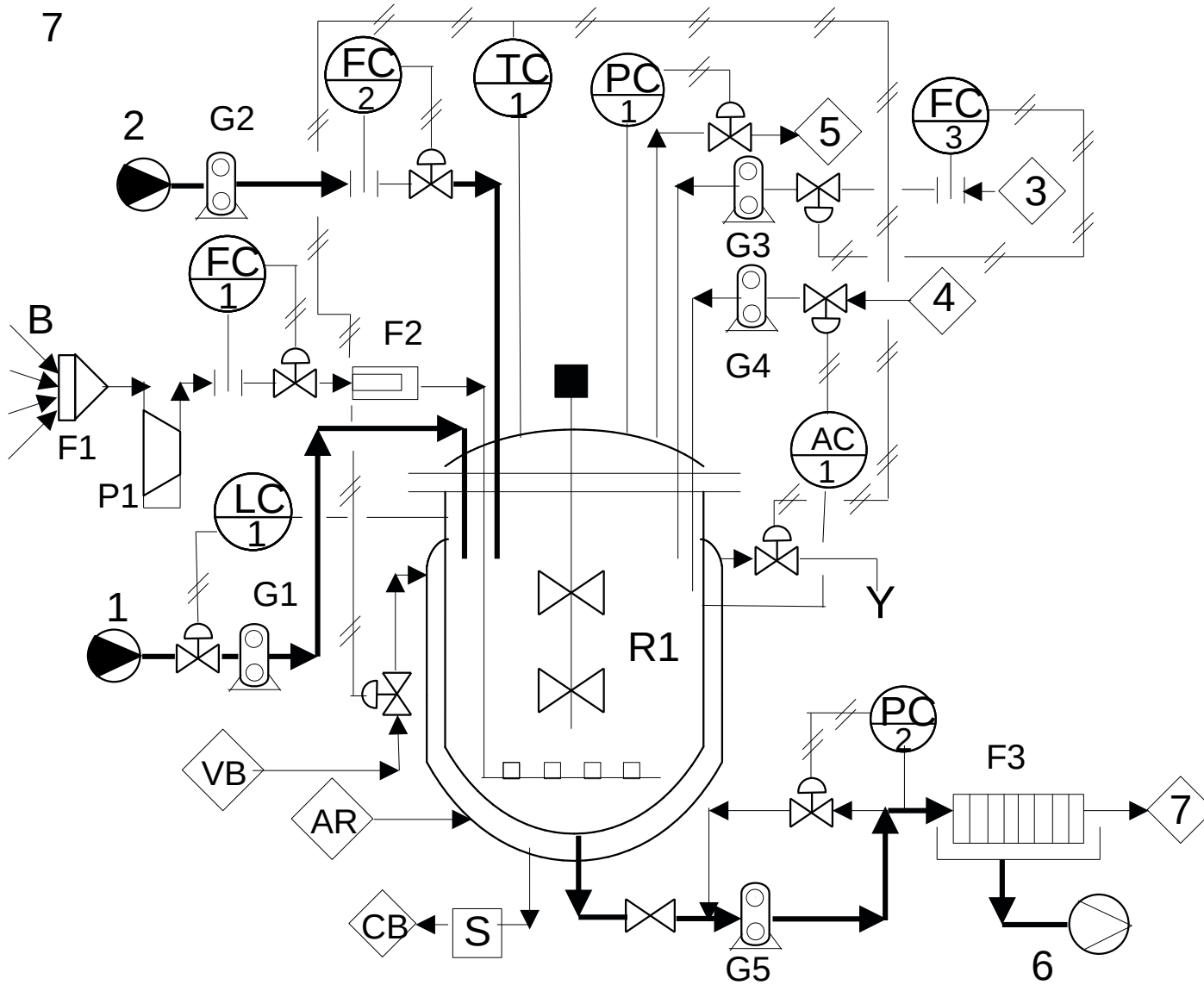
6



CONTROLLI

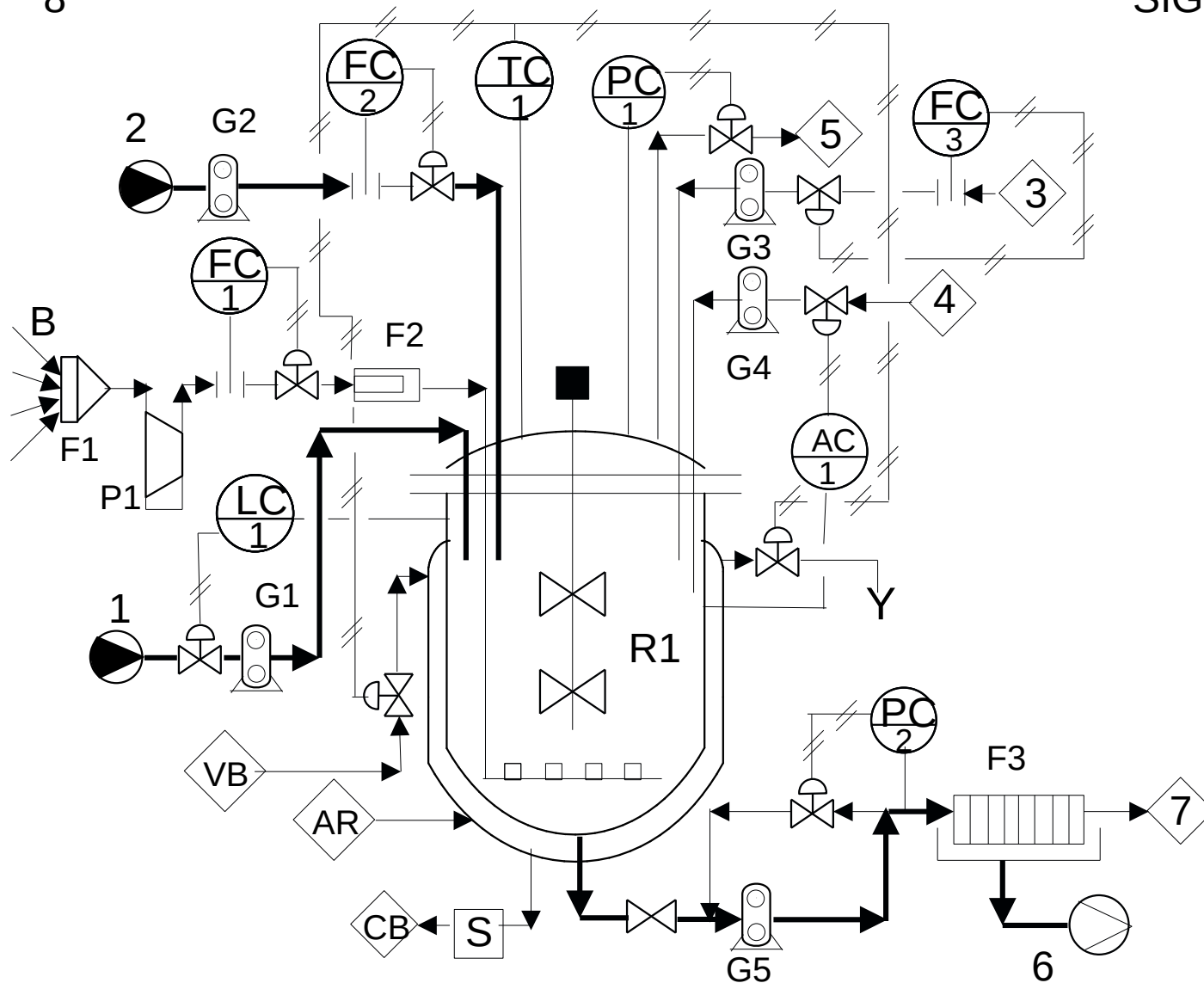
PORTATE  
ANALITICI  
LIVELLI

7



CONTROLLI  
TEMPERATURA  
STERILIZZAZ  
PROCESSO

PRESSIONE



## SIGLE E LEGENDA

SCHEMA DI PROCESSO  
BIOFERMENTATORE  
AEROBICO

## LEGENDA APPARECCHIATURE

- G1-4 POMPE DOSATRICI
- G5 POMPA ROTATIVA
- P1 COMPRESSORE ARIA
- F1 FILTRO A CARTUCCIA
- F2 ULTRAFILTRO STERILIZZANTE
- R1 BIOFERMENTATORE
- F1 FILTRO PRESSA
- S SCARICATORE CONDENSE

## LEGENDA MATERIALI

- 1 BRODO DI COLTURA
- 2 INOCULO
- B ARIA
- 3 AUSILIARI FERMENTAZIONE
- 4 CORRETTORE di Ph
- 5 SCARICO GAS
- 6 METABOLITA E BRODO PER ESTRAZIONE E RECUPERO
- 7 BIOMASSA
- VB VAPORE BASSA PRESSIONE
- CB CONDENSE BASSA PRESS.
- AR ACQUA RAFFREDDAMENTO